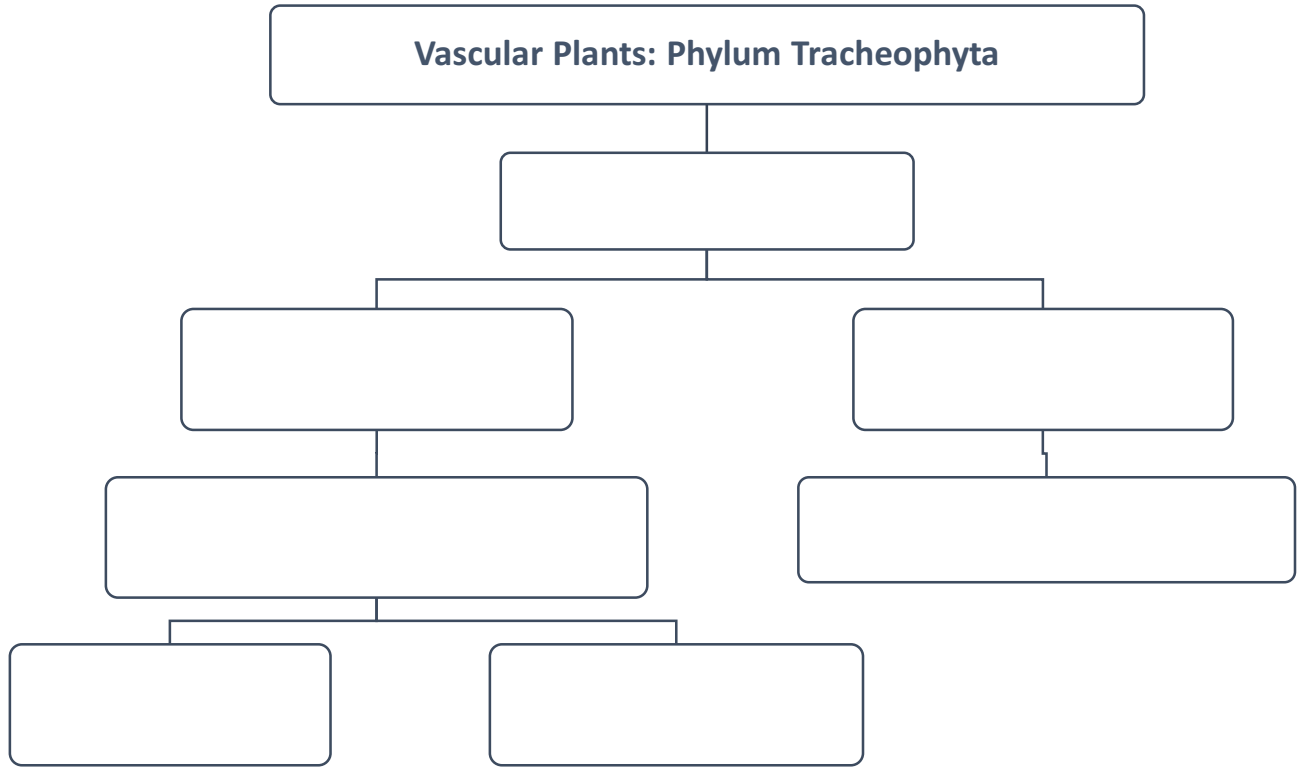


Phylum Tracheophyta: Angiosperms



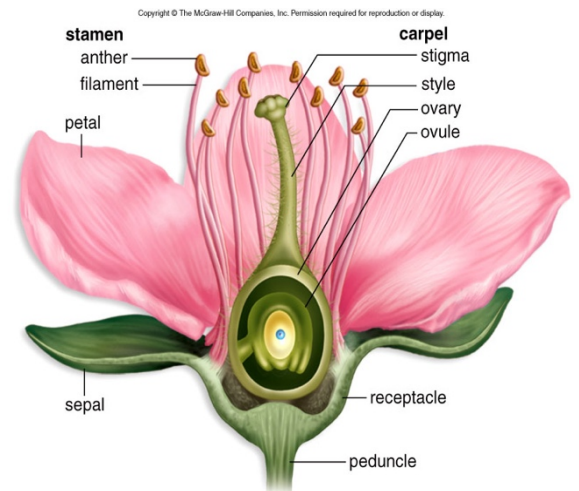
Examples: Flowering Plants –

Angiosperm Characteristics:

-
-
-
-
-

Alternation of Generations:

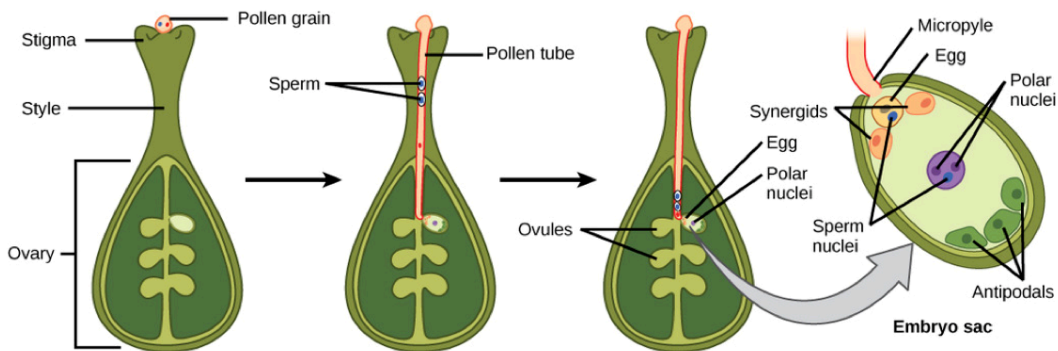
-
-
-



-
-
-
-

Double Fertilization: Alternation of Generations

-
-
-



The pollen grain adheres to the stigma, which contains two cells: a generative cell and a tube cell.

The pollen tube cell grows into the style. The generative cell travels inside the pollen tube. It divides to form two sperm.

The pollen tube penetrates an opening in the ovule called a micropyle.

One of the sperm fertilizes the egg to form the diploid zygote. The other sperm fertilizes two polar nuclei to form the triploid endosperm, which will become a food source for the growing embryo.

Angiosperm Life Cycle

Copyright © The McGraw-Hill Companies, Inc. Permission required for reproduction or display.

