

**Phylum Platyhelminthes**

- Class Turbellaria ex: planaria
- Class Trematoda ex: flukes
- Class Cestoda ex: tapeworms

**Characteristics**

**Body Symmetry:** \_\_\_\_\_

**Body Organization:** \_\_\_\_\_

- 
- 
- 

**Body Cavity:** \_\_\_\_\_

**Digestive System:**

- 

**Reproduction:**

- Sexual:
- Asexual:

**Circulation:** \_\_\_\_\_

**Nervous System:**

- 
- 

**Respiration:**

**Excretion:**

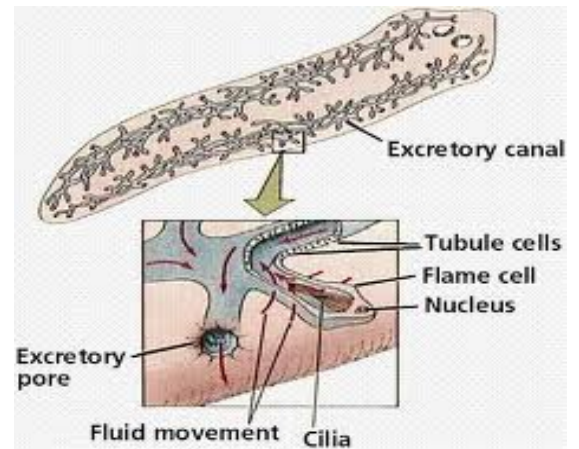
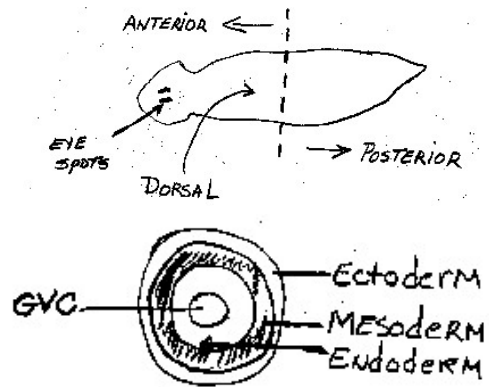
**Habitat:**

**Ecological Roles:**

- 
- 
- 

**Additional Information:**

- Free living ex: Planaria
  - 
  - 
  -



- Parasitic ex: flukes and tapeworms

○

○

**Class Cestoda:**

- 
- 
- 

○

■

■

○

- Two body regions

○

■

■

○

■

**Class Trematoda:**

Ex: Chinese Liver Fluke

Fluke (liver, lung, heart, intestine)

- **Parasitic**

○

○

- **No need for circulation or respiration systems**

○

○

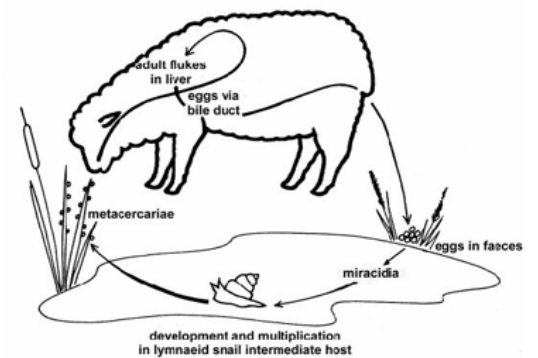
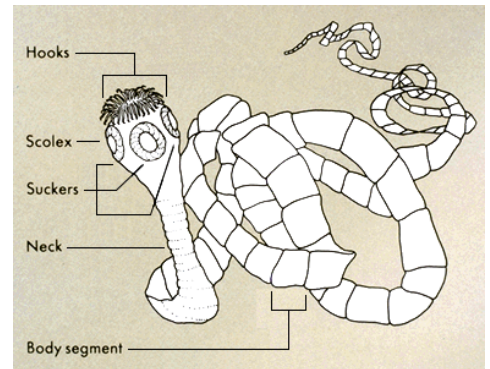
- **Flame cells**

- **Nerve cord and anterior ganglia**

○

- **Hermaphrodites**

○



**Class Turbellaria**

Ex: Planaria

- **Excretion**

- 
- 
- 
- 

- **Muscles**

- 
- 

