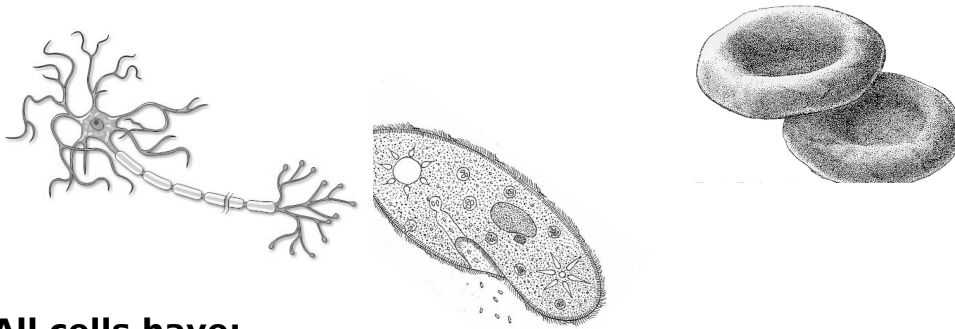


<b>Introductory Concepts in Biology: Cell Structure and Function</b>
--

**Cells:**

Cells are the \_\_\_\_\_.  
It is the smallest unit at which life can exist.

Cells come in a variety of shapes and sizes with many \_\_\_\_\_ functions.

**All cells have:**

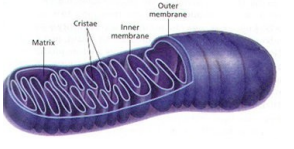
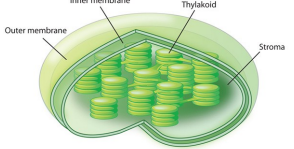

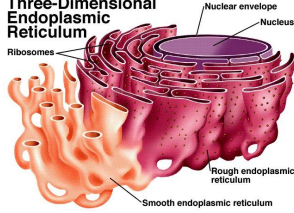



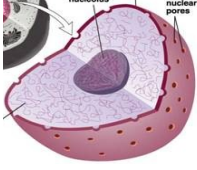
\_\_\_\_\_ - separates cell from external environment, regulates flow of materials in and out of the cell.

\_\_\_\_\_ (\_\_\_\_\_) - Rigid structure surrounding the cell membrane, provides support.

\_\_\_\_\_ - jelly like fluid that contains all organelles and important substances like water and sugar.

\_\_\_\_\_ - instructions for the cell (usually DNA)

\_\_\_\_\_ - Special structures that carry out specific roles in the cell

Organelle	Function	Image
	Provide energy for the cell by converting _____ into _____. Chemical reactions take place on the _____ of the inner surface of the mitochondrion.	
	Specialized pigments trap use energy from the sun to change _____ into _____. This process is called _____. Give plants their characteristic green colour.	
	Small organelles with _____ May be floating in the _____ or attached to the endoplasmic reticulum (ER) Used to make _____	
	Network of membrane covered _____ in a cell Acts as a _____ for materials made in the cell May have _____ attached at surface	
	Membrane covered sacs used for _____ May carry products made in the cell such as _____	
	Larger membrane covered sac Used for storage of _____ and other materials in a cell Plant cells usually have a large _____	
	Sorts and packages _____ for transport	
	_____ all of the cells activities Contains _____ Surrounded by the <b>nuclear</b> _____ which has <b>nuclear</b> _____ to allow certain molecules in and out.	
	Region of the nucleus where _____ are made	

What type of cell is this? \_\_\_\_\_

How do you know? \_\_\_\_\_

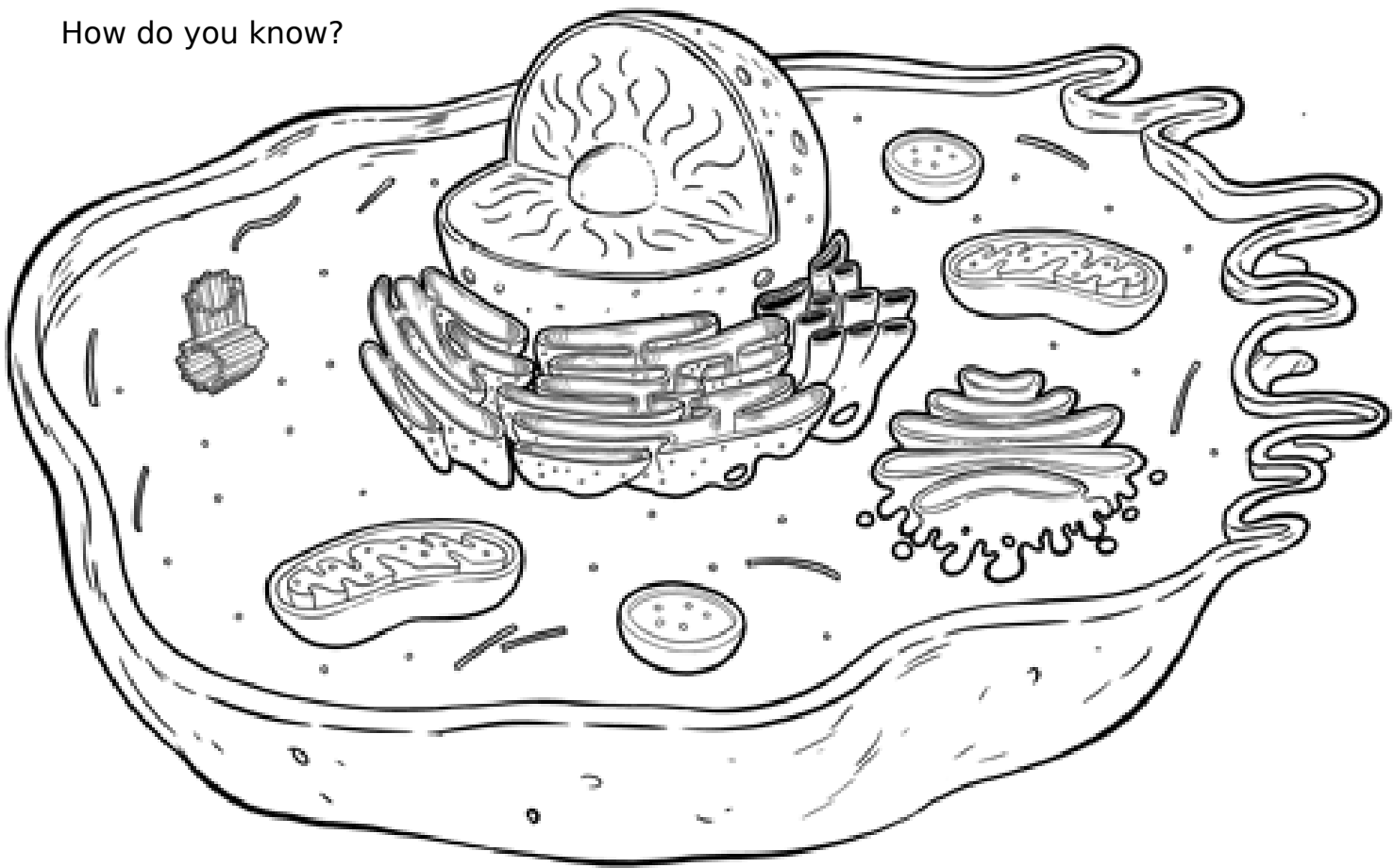
\_\_\_\_\_

\_\_\_\_\_

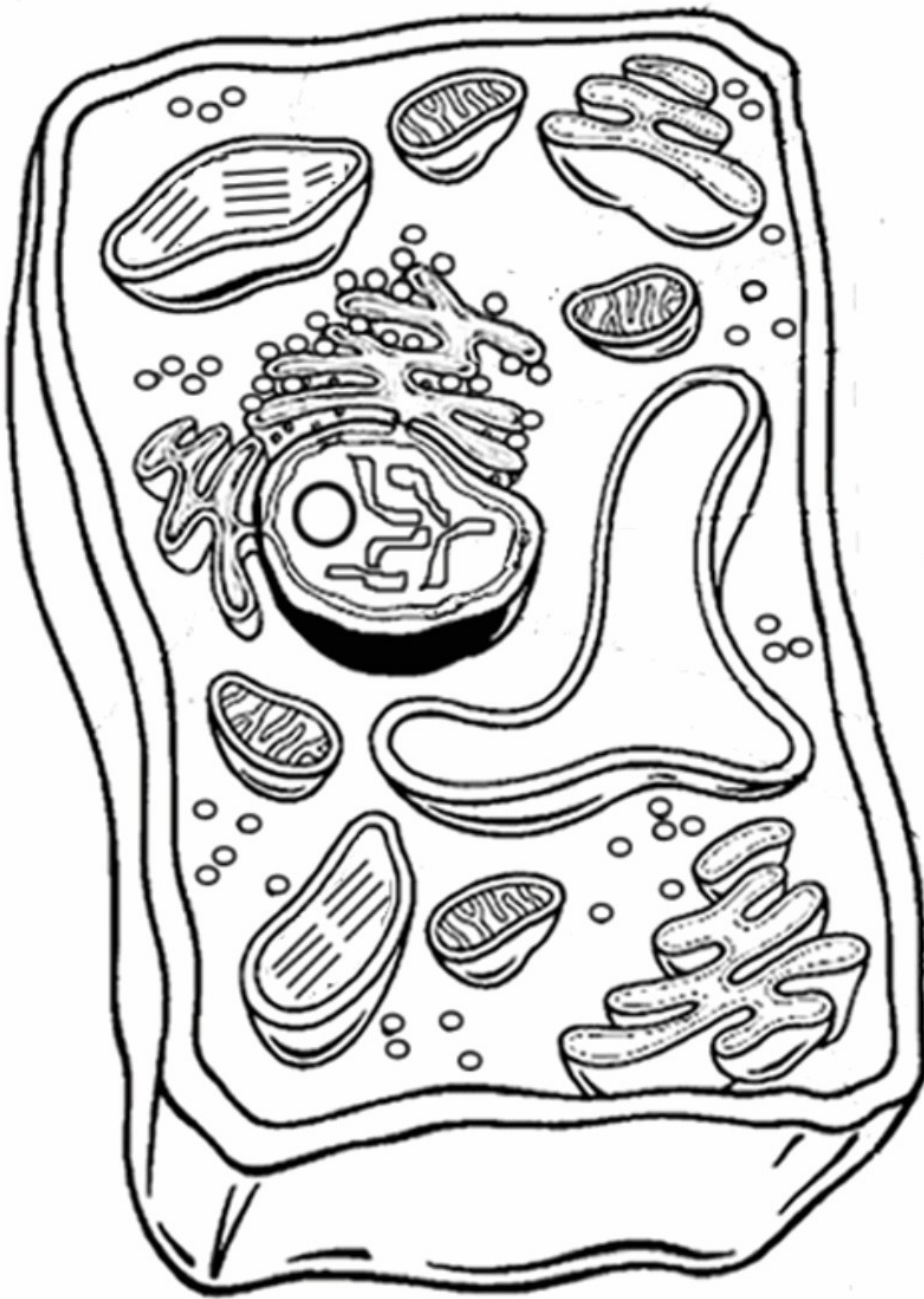
Label and colour the organelles

What type of cell is this? \_\_\_\_\_

How do you know?



\_\_\_\_\_



---

Label and colour the organelles